

CONTENTS.

	PAGE
THE INFLUENCE OF WAR ON THE COINAGE OF ENGLAND. BY LIEUT.-COLONEL H. W. MORRIESON, R.A., <i>LIBRARIAN</i>	1
THE BERKELEY MINT. BY P. W. P. CARLYON-BRITTON, F.S.A., <i>PRESIDENT</i> .	17
THE "GOTHABYRIG" MINT. BY P. W. P. CARLYON-BRITTON, F.S.A., <i>PRESIDENT</i>	33
A NUMISMATIC HISTORY OF THE REIGNS OF WILLIAM I. AND II. (1066-1100). PART II. BY P. W. P. CARLYON-BRITTON, F.S.A., <i>PRESIDENT</i>	47
PORTRAITURE OF OUR TUDOR MONARCHS ON THEIR COINS AND MEDALS. BY HELEN FARQUHAR	79
A REMARKABLE GOLD COIN OF HENRY VIII. BY L. A. LAWRENCE, F.R.S.A. (IRELAND), <i>DIRECTOR</i>	145
AN ELIZABETHAN COINER. BY THE REV. J. CHARLES COX, LL.D., F.S.A.	157
THE ENGLISH SILVER COINS OF JAMES I. BY LIEUT.-COLONEL H. W. MORRIESON, R.A., <i>LIBRARIAN</i>	165
EARLY AUSTRALIAN COINAGE. BY ALFRED CHITTY. CORRESPONDING MEMBER OF THE COUNCIL (MELBOURNE).	179
THE COINS OF THE IONIAN STATE. BY NATHAN HEYWOOD	189
THE BRONZE COINAGE OF QUEEN VICTORIA. BY FLEET-SURGEON A. E. WEIGHTMAN, R.N.	193
A HOARD OF STATERS AND "GOLD BULLETS" RECENTLY DISCOVERED IN FRANCE, WITH SPECIAL REFERENCE TO THE ANCIENT BRITISH STATERS OF THE TYPE OF EVANS, PLATE B, NO. 8. BY BERNARD ROTH, F.S.A., <i>VICE-PRESIDENT</i>	221
SOME ROMAN BRASS COINS FOUND AT LINCOLN. BY NATHAN HEYWOOD	229
A LEADEN CROSS BEARING A STYCA IMPRESSION AND OTHER ANTIQUITIES FOUND IN YORK. BY G. A. AUDEN, M.A., M.D.	235
A HOARD OF ENGLISH COINS FOUND IN SWITZERLAND. BY BERNARD ROTH, F.S.A., <i>VICE-PRESIDENT</i>	239
THE ANGLO-SAXON COMPUTATION OF HISTORIC TIME IN THE NINTH CENTURY. BY ALFRED ANSCOMBE, F.R.HIST.SOC., <i>HONORARY SECRETARY</i>	241
FORGERY IN RELATION TO NUMISMATICS. PART II. (EDWARD I. TO ELIZA- BETH.) BY L. A. LAWRENCE, F.R.S.A.(IRELAND), <i>DIRECTOR</i>	311
LEADEN TOKENS. BY J. B. CALDECOTT AND G. C. YATES, F.S.A.	317

	PAGE
PROCEEDINGS OF THE SOCIETY	327
OFFICERS AND COUNCIL	329
PROCEEDINGS	331
REPORT OF THE COUNCIL	373
INCOME AND EXPENDITURE ACCOUNT AND BALANCE SHEET	381
LIST OF MEMBERS	383
INDEX	400

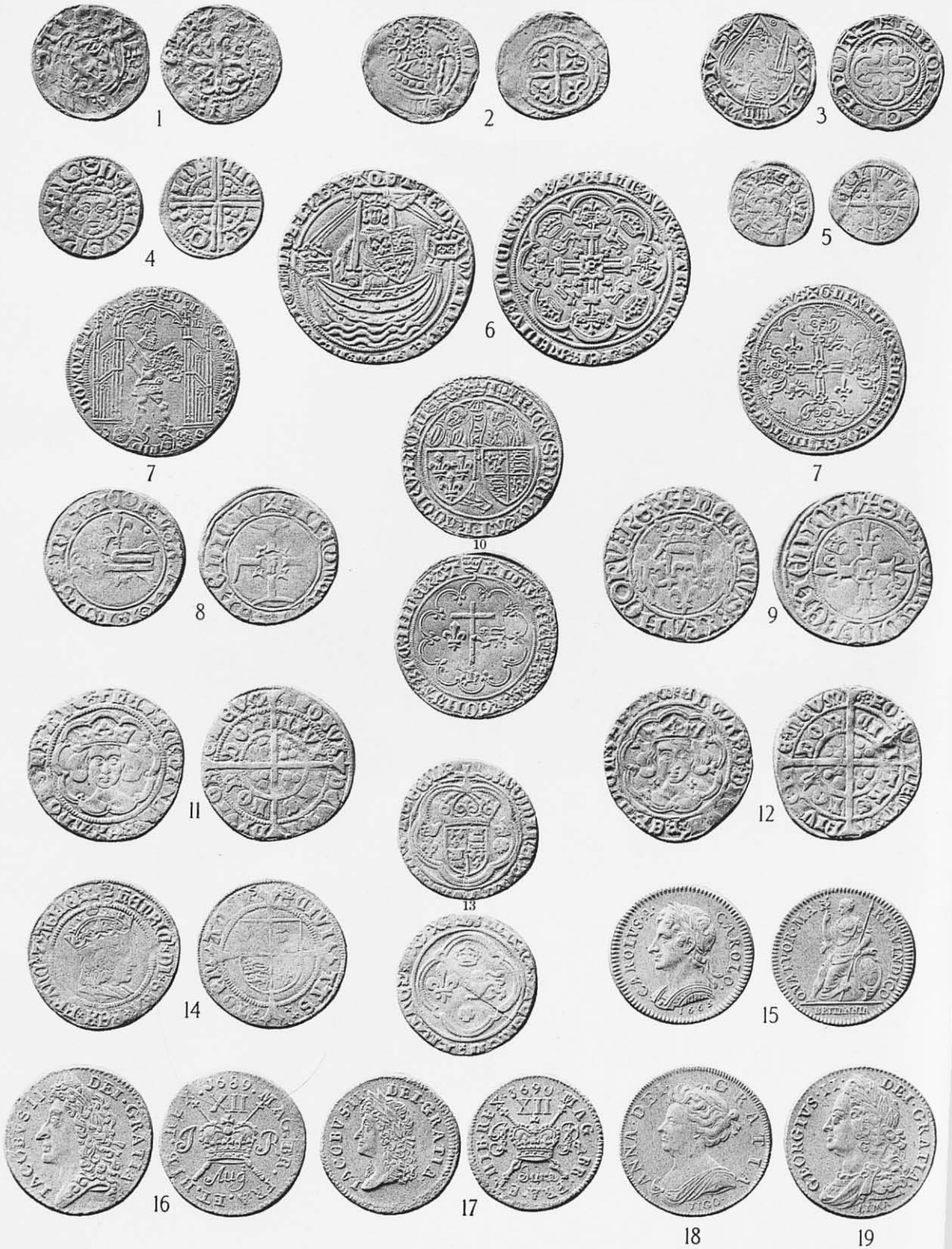
ILLUSTRATIONS.

INFLUENCE OF WAR ON THE COINAGE OF ENGLAND.

PLATE I.	<i>FACING</i>	1
PLATE II.	<i>FACING</i>	8
PLATE III.	<i>FACING</i>	10
PLATE IV.	<i>FACING</i>	13
PENNY OF EDWARD THE CONFESSOR STRUCK AT BERKELEY		18
PENNY OF WILLIAM I., STRUCK AT BERKELEY		19
PENNIES OF HENRY III., STRUCK AT BERKELEY. FIGURES C AND D		25
PENNY OF ÆTHELRÆD II., STRUCK AT YTHANCEASTER. FIGURE A.		35
PENNY OF CNUȚ, STRUCK AT YTHANCEASTER. FIGURE B.		35
COINS OF WILLIAM I. AND II.		
PLATE V. THE BEDFORD MINT.	<i>FACING</i>	47
PLATE VI. THE WALLINGFORD MINT	<i>FACING</i>	51
PLATE VII. THE CHESTER MINT	<i>FACING</i>	57
PLATE VIII. THE RHUDDLAN MINT.		
,, THE LAUNCESTON MINT.		
,, THE DERBY MINT	<i>FACING</i>	66
HENRY VII. GROAT, THIRD COINAGE, MINT-MARK, LYS		87
PORTRAIT OF HENRY VII., NATIONAL PORTRAIT GALLERY	<i>FACING</i>	87
HENRY VIII.'S FIRST COINAGE: GROAT WITH HIS FATHER'S BUST; MINT-MARK, PORTCULLIS.		90
TESTOON OF THE THIRD COINAGE OF HENRY VIII.		93
HENRY VII., HENRY VIII., ELIZABETH OF YORK AND JANE SEYMOUR. FROM THE ENGRAVING BY VERTUE, AFTER REMÉE VAN LEEMPUT'S COPY OF HOLBEIN	<i>FACING</i>	94
MINIATURE OF HENRY VIII.; MR. J. PIERPONT MORGAN'S COLLECTION		95
HENRY VIII., THREE-QUARTER FACED GROAT, THIRD COINAGE		95

	PAGE
HENRY VIII., BY HOLBEIN, AT ALTHORP	<i>FACING</i> 96
GROAT OF HENRY VIII.'S SECOND COINAGE. HIS OWN PORTRAIT	97
BEARDED MINIATURE OF HENRY VIII., WINDSOR CASTLE	98
UNBEARDED MINIATURE OF HENRY VIII., WINDSOR CASTLE	101
PORTRAIT OF HENRY VIII., WOODCUT PROOF, HIGDEN'S <i>POLYCHRONICON</i>	103
LEADEN MEDALLION OF HENRY VIII., BRITISH MUSEUM.	106
DEBASED GROAT OF HENRY VIII. THREE-QUARTER FACE TO RIGHT	107
HALF-SOVEREIGN OF EDWARD VI., BEARING HENRY VIII.'S NAME	110
REDDE CVIQVE GROAT	111
HALF-SOVEREIGN OF EDWARD VI., 1549	112
EDWARD VI., NATIONAL PORTRAIT GALLERY	<i>FACING</i> 113
LEADEN MEDALLION OF EDWARD VI.	114
PICTURE OF EDWARD VI. IN OIL ON PANEL	<i>FACING</i> 115
SHILLING OF EDWARD VI., 1551	115
CORONATION MEDAL OF EDWARD VI.	116
HALF-SOVEREIGN OF EDWARD VI., 1552	116
MARY I.'S SECOND GROAT.	119
PHILIP II. AND MARY I., MEDAL BY JACOPO DA TREZZO }	<i>FACING</i> 120
SHILLING OF PHILIP AND MARY	
ESCUDO OF FERDINAND AND ISABELLA OF SPAIN	123
ELIZABETH'S CROWN OF 1601	131
ELIZABETH'S PATTERN SIXPENCE, 1601	132
ARMADA BADGE.	133
ARMADA JEWEL	<i>FACING</i> 134
MINIATURE OF ELIZABETH, AGED 38.	137
MEDALLION OF QUEEN ELIZABETH BY SIMON DE PASSE	138
VERTUE'S PRINT AFTER ISAAC OLIVER'S DRAWING OF QUEEN ELIZABETH }	<i>FACING</i> 138
SIXPENCES OF ELIZABETH. MINT-MARK, STAR	139
PATTERN FOR SOVEREIGN OF ELIZABETH. MINT-MARK, STAR	140
MINIATURE OF ELIZABETH.	142
THE CROWN OF THE ROSE AND CONTEMPORARY COINS, ILLUSTRATING ITS ISSUE AND WITHDRAWAL	<i>FACING</i> 155
THE ENGLISH SILVER COINS OF JAMES I.	
PLATE I. CROWNS AND HALF-CROWNS	<i>FACING</i> 167
PLATE II. SHILLINGS AND SIXPENCES	<i>FACING</i> 171
PLATE III. SIXPENCES AND SMALLER COINS	<i>FACING</i> 173
EARLY AUSTRALIAN COINAGE	<i>FACING</i> 179
THE COINS OF THE IONIAN STATE.	
PLATE I.	<i>FACING</i> 189
PLATE II.	<i>FACING</i> 191

	PAGE
THE BRONZE COINAGE OF QUEEN VICTORIA.	
PLATE I. PENNIES	<i>FACING</i> 213
PLATE II. HALFPENNIES AND FARTHINGS	<i>FACING</i> 217
STATERS AND GOLD BULLETS	<i>FACING</i> 221
GOLD BULLETS FOUND AT CAIRNMUIR, PEEBLESSHIRE, IN 1806	222
BRONZE CHAPE FROM A SWORD SCABBARD. FIGURE A	<i>FACING</i> 235
LEADEN CROSS BEARING A STYCA IMPRESSION. FIGURE B	<i>FACING</i> 235
FROM THE COTTON MS. CALIGULA A.XV., FOLIOS 122b, 123a. WRITTEN IN THE XITH CENTURY	<i>FACING</i> 241
ILLUSTRATIONS OF FORGERIES.	
PLATE I. PLANTAGENET PERIOD.	
PLATE II. "	
PLATE III. TUDOR PERIOD.	
PLATE IV. "	
PLATE V. "	<i>FOLLOWING</i> 310
LEADEN TOKENS	<i>FACING</i> 317
ERROR HALFPENNY OF WILLIAM III.	329
PENNY OF EDWARD THE CONFESSOR, STRUCK AT BARNSTAPLE	332
PENNY RESEMBLING A TYPE OF COENWULF	338
PENNY ATTRIBUTED TO ALWALD OF NORTHUMBRIA	338
ANCIENT BRITISH STATER, INSCRIBED WITH THE LETTER E	346
PENNY OF ARCHBISHOP WULFRED	346
HALF-GROAT OF HENRY VIII., 1ST ISSUE, STRUCK AT CANTERBURY	347
PENNY OF HENRY VIII., MINT-MARK, SUN AND CLOUD	347
BRISTOL LEADEN TOKEN, DATED 1511	348
HALF-CROWN OF CHARLES I., STRUCK AT ABERYSTWITH	349
SHILLING OF CHARLES I., STRUCK AT OXFORD	349
SHILLING OF CHARLES I., STRUCK AT ABERYSTWITH	349
JERSEY 1/13TH OF A SHILLING, 1851.	350
PROOF PENNY OF QUEEN VICTORIA, 1860.	350
NOBLE OF RICHARD II.	353
QUARTER STATER OF CUNOBELIN	354
ANCIENT BRITISH STATER, PROBABLY OF EPATICCUS	355
SILVER COIN INSCRIBED EPA	355
COPPER COIN OF CUNOBELIN	368



INFLUENCE OF WAR ON THE COINAGE OF ENGLAND.