

CONTENTS.

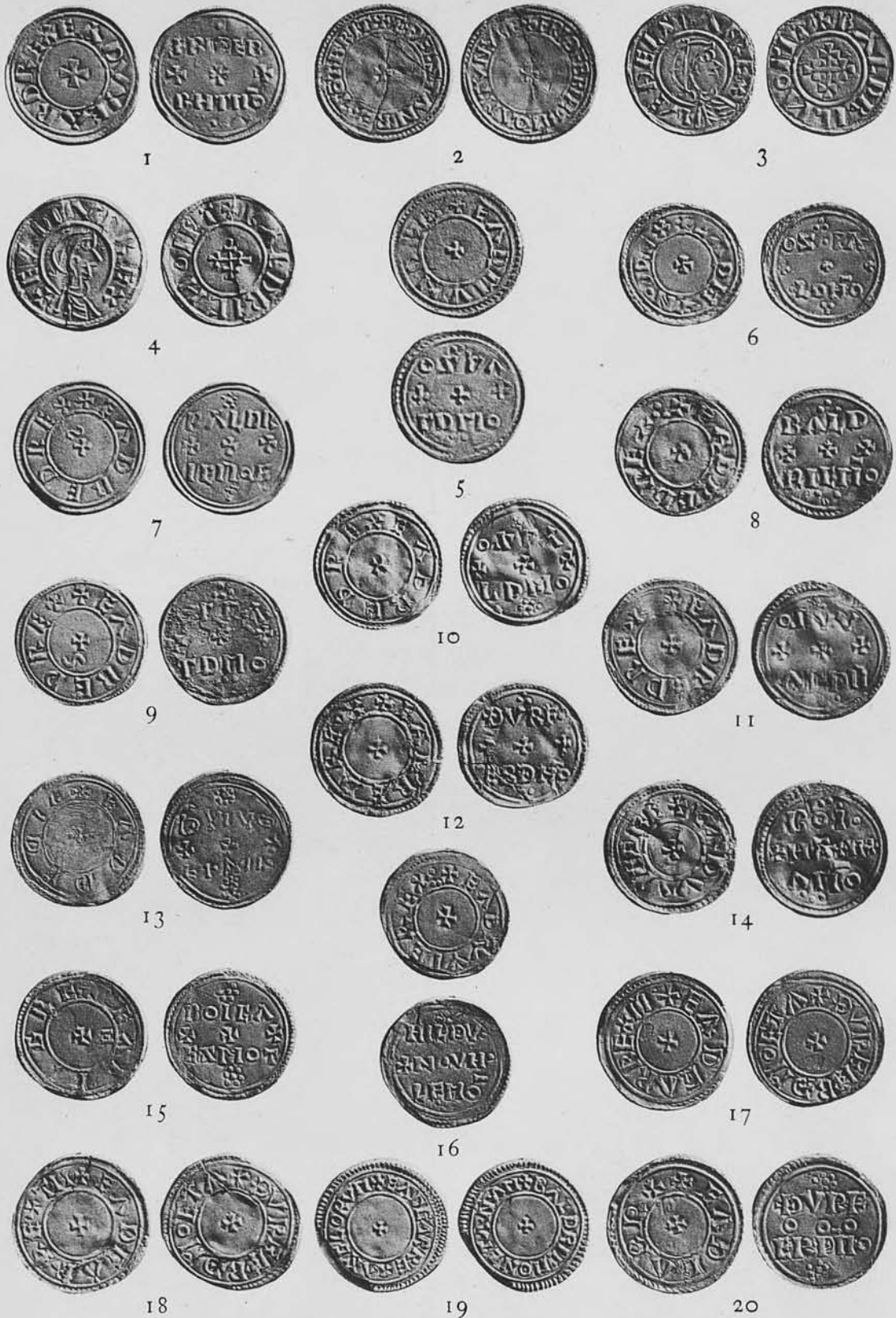
	PAGE
THE NORTHAMPTON AND SOUTHAMPTON MINTS. BY WILLIAM C. WELLS	I
A HOARD OF COINS OF ÆTHELRÆD II FOUND IN IRELAND. BY WILLIAM C. WELLS	51
ASSAYS AND IMITATIONS, FOREIGN AND NATIVE, OF THE LATE SAXON PERIOD, A.D. 975-1066. BY H. ALEXANDER PARSONS	61
THE CHRONOLOGY OF THE HIBERNO-DANISH COINAGE. BY H. ALEXANDER PARSONS	99
THE SEQUENCE OF MINT-MARKS PRECEDING, DURING, AND SUCCEEDING THE RESTORATION OF HENRY VI. BY RAYMOND C. CARLYON-BRITTON	125
ROYAL CHARITIES. (SECOND SERIES.) PART II. BY HELEN FARQUHAR	133
AN EMERGENCY COINAGE IN IRELAND. BY HELEN FARQUHAR	165
SOME PORTRAIT-MEDALS STRUCK BETWEEN 1745 AND 1752 FOR PRINCE CHARLES EDWARD. BY HELEN FARQUHAR	171
THE ATTRIBUTION OF THE "BR" MONOGRAM ON CHARLES I'S COINS. BY LIEUT.-COLONEL H. W. MORRIESON, F.S.A.	227
SOME ENTRIES OF NUMISMATIC INTEREST IN THE MASTER'S ACCOUNTS OF THE MERCHANT TAILORS' GILD OF DUBLIN, 1553-61. BY LIEUT.-COLONEL H. W. MORRIESON, F.S.A.	235
ORDERS, DECORATIONS, AND MEDALS, GIVEN TO THE BRITISH NAVY, ARMY, AND FLYING FORCE IN THE GREAT WAR. BY MAJOR W. J. FREER, D.L., V.D., F.S.A.	241
ARNOLD VILLAGE TOKENS. BY FRANK E. BURTON, J.P.	275
SOUTH NOTTS YEOMANRY MEDALS. BY FRANK E. BURTON, J.P.	277
GOLD AND SILVER MEDALS OF THE HONOURABLE EAST INDIA COMPANY. BY C. WINTER	281
PROCEEDINGS OF THE SOCIETY.	
FOR THE YEAR 1923	295
FOR THE YEAR 1924	341
LIST OF MEMBERS	381
INDEX	397

. ILLUSTRATIONS.

	PAGE
THE NORTHAMPTON AND SOUTHAMPTON MINTS.	
PLATE I, 1—20	<i>Facing</i> 1
PLATE II, 1—18	<i>Facing</i> 33
A HOARD OF COINS OF ÆTHELRÆD II.	
PLATE I, 1—18	<i>Facing</i> 51
ASSAYS AND IMITATIONS OF LATE ANGLO-SAXON COINS.	
14 COINS, FIGURED	70—94
IRISH HALFPENNY, 1776	97
CHRONOLOGY OF HIBERNO-DANISH COINAGE.	
COIN OF HAROLD HARDRADA'S TIME	104
PLATE I, 1—21	<i>Facing</i> 106
PENNY OF SIHTRIC, KING OF DUBLIN	113
PLATE II, 22—42	<i>Facing</i> 116
PLATE III, 43—63	<i>Facing</i> 119
THE SEQUENCE OF MINT-MARKS UNDER HENRY VI.	
COINS ILLUSTRATING THE SEQUENCE. PLATE, 1—13	<i>Facing</i> 125
ROYAL CHARITIES.	
DISTRIBUTION OF ALMS. PLATE	<i>Facing</i> 133
THREEPENCE OF CHARLES II	133
GOLD BEZANT OF JAMES I	150
WOLSEY'S GROAT	152
HALFPENNY OF GEORGE III	154
QUEEN MARY'S FIRST GROAT (1553)	156
CHARLES II PATTERN FARTHING	164
AN EMERGENCY COINAGE IN IRELAND.	
SILVER SIXPENCE	166
COPPER SIXPENCE	167
PRINCE CHARLES EDWARD.	
PORTRAIT BY ANTOINE DAVID. PLATE	<i>Facing</i> 171
"AMOR ET SPES" MEDAL	178
ENGRAVING AFTER THE "AMOR ET SPES" MEDAL. PLATE	<i>Facing</i> 183
SMALL "AMOR ET SPES" MEDAL	184
THE "MEDAL OF THE OAK"	186
MEDAL WITH "SEMPER ARMIS NUNC ET INDUSTRIA"	191
TINY PORTRAIT OF PRINCE CHARLES IN GOLD	193

	PAGE
PRINCE CHARLES EDWARD— <i>continued.</i>	
PRINCE CHARLES IN 1735	196
THE "REDEAT MAGNUS ILLE GENIUS BRITANNIÆ" MEDAL	199
THE "SUUM CUIQUE" MEDAL	200
THE CHARLES AND LOUISE OF STOLBERG MEDAL	201
THE JACOBITE MEDAL (1750)	201
THE "HIGHLANDER" MEDAL	202
A SILVER-GILT MEDAL OF PRINCE CHARLES	202
A BRONZE PLAQUE OF PRINCE CHARLES	203
A SILVER MEDALLION OF PRINCE CHARLES	203
PRINCE CHARLES AS A HIGHLANDER	205
PLATE OF CURRENCY NOTES (1746)	<i>Facing</i> 207
COPPER PLATE FOR A NOTE OF ONE PENNY	207
COPPER PLATE (VALUE UNSTATED)	208
UNIQUE PRINT OF PRINCE CHARLES	210
PRINCE CHARLES EDWARD. PLATE	<i>Facing</i> 210
ENAMEL LOCKET OF PRINCE CHARLES	214
LEMOYNE'S BUST OF PRINCE CHARLES	215
PRINCE CHARLES AND PRINCE HENRY	218
MARRIAGE MEDAL OF JAMES AND CLEMENTINA	219
MEDAL CELEBRATING THE BIRTH OF PRINCE CHARLES	220
QUEEN ANNE AND PRINCE JAMES	221
PORTRAIT OF PRINCE CHARLES, AT MADRESFIELD COURT	224
PRINCE CHARLES IN POLISH DRESS. PLATE	<i>Facing</i> 225
ORDERS, DECORATIONS AND MEDALS.	
PLATE	<i>Facing</i> 245
SILVER MEDAL.	
3. BADGE : G.B.E., K.B.E., C.B.E.	
4. BADGE : O.B.E.	
5. BADGE : M.B.E.	
DISTINGUISHED SERVICE MEDAL	247
1914 STAR	248
1914-15 STAR	249
MILITARY CROSS	250
MILITARY MEDAL	251
AIR FORCE CROSS	252
THE DISTINGUISHED FLYING MEDAL	253
THE AIR FORCE MEDAL	254
ROYAL AIR FORCE MEDAL : "FOR LONG SERVICE AND GOOD CONDUCT"	256

	PAGE
ORDERS, DECORATIONS AND MEDALS— <i>continued.</i>	
BRITISH WAR MEDAL, 1914-18	257
ADMIRALTY BADGE: "MINE-SWEEPING OPERATIONS"	268
THE VICTORY MEDAL	269
MERCANTILE MARINE WAR MEDAL	271
TERRITORIAL WAR MEDAL, 1914-19	272
ARNOLD VILLAGE TOKENS. PLATE	<i>Facing</i> 275
SOUTH NOTTS YEOMANRY MEDALS. PLATE	<i>Facing</i> 275
GOLD AND SILVER MEDALS OF THE HONOURABLE EAST INDIA COMPANY.	
DECCAN MEDAL (OBVERSE)	281
EGYPT, 1801	285
RODRIGUES, BOURBON, ISLE OF FRANCE MEDAL (OBVERSE)	287



COINS OF THE NORTHAMPTON MINT